

Organizations ADCANP Funded Across the State of Alabama

District 1

Alta Pointe Health Systems, Inc.
Auburn University
Baldwin County Child Advocacy Center
Big Brothers Big Sisters of South Alabama
CASA Mobile, Inc.
Catholic Social Services for Family Service
Center - Bay Minette
Goodwill Easter Seals
Gulf Regional Early Childhood Services
Mobile County Health Department
Preschool Center for Deaf and Blind
The Family Center
United Cerebral Palsy of Mobile, Inc.

District 2

ACES of Elmore
Aid to Inmate Mothers
Alabama Parent Education Center
Alabama Partnership for Children
Alfred Saliba Family Services Center
Auburn University
Butler County Board of Education
Dale County Children's Policy Council dba
Ozark-Dale County Family Service Center
Family Guidance Center of Alabama
Family Services Center of Coffee County
Family Support Center
Gift of Life Foundation
Healthy Kids
Montgomery Area Family Violence Program, Inc.
d/b/a Family Sunshine Center
Montgomery Area Nontraditional Equestrians
Montgomery Public Schools
Organized Community Action Program, Inc.
Second Chance Foundation
United Cerebral Palsy of Mobile, Inc.

District 3

Chambers County Council for Neglected and Dependent
Children and Youth, Inc.
Child Care Resource Center Inc.
Children and Family Connection of Russell County, Inc.
Coosa Valley Youth Services
East Alabama Mental Health
East Central Alabama United Cerebral Palsy Inc.
Employers' Child Care Alliance
Family Services Center of Calhoun County, Inc.
FIRST Family Service Center
Sylacauga Alliance for Family Enhancement, Inc.
Talladega Clay Randolph Child Care Corporation
Twin Cedars Youth and Family Services, Inc.

District 4

Big Brothers Big Sisters of Northeast
Family Services of North Alabama
Family Success Center of Etowah County

District 4 (continued)

Gadsden State Community College
Jasper Area Family Services Center, Inc.
Marshall-Jackson 310 Agency
Thirteenth Place
United Way's Success By 6

District 5

Athens Limestone County Family Resource Center
Athens State University
Attention Homes of Northwest Alabama
Big Brothers Big Sisters of North AL
Calhoun Community College
Community Action Agency of Northwest AL, Inc.
Family Services Center, Inc.
Lawrence County Schools
National Children's Advocacy Center
Parents And Children Together
Sheffield City Schools
United Cerebral Palsy of Huntsville and
Tennessee Valley, Inc.
United Cerebral Palsy of Northwest Alabama

District 6

Alabama State CASA Network
Big Brothers Big Sisters of Greater Birmingham
Board of Trustees of the University of Alabama
for the University of Alabama at Birmingham Camp
Fire Alabama
Childcare Resources
Children's Aid Society
Exchange Club Child Abuse Prevention Center
Family Guidance Center of Alabama
Friends of the Court/CASA of Shelby County
Gateway
Girls Incorporated of Central Alabama
Glenwood, Inc.
IMPACT Family Counseling
Kid One Transport, Inc.
St. Clair County Day Program, Inc.
United Cerebral Palsy of Greater Birmingham
Vineyard Family Services of Central Alabama
Youth Towers

District 7

BAMA Kids, Inc.
Big Brothers Big Sisters of West Alabama
Central AL Regional Child Advocacy Center
Child Abuse Prevention Services of Tuscaloosa
Child Development Resources
Dallas County Children's Policy Council
Pickens County Family Resource Center
The University of Alabama
Tuscaloosa's One Place
UCPWA of West Alabama (UCPWA)

ALABAMA DEPARTMENT OF CHILD ABUSE AND NEGLECT PREVENTION

The Children's Trust Fund

ANNUAL REPORT 2015



Preventing Child Abuse and Neglect Since

1983



BOARD MEMBERS 2014-2015

District Members

Rev. Clinton L. Johnson
District One

Anita L. Archie, Board Chair
District Two

Dr. Mitchell Brown
District Three

Myron C. Gargis
District Four

Senator Arthur Orr
District Five

Senator Cam Ward
District Six

Nancy G. Sewell
District Seven

Members At Large

Mary B. Ashcraft
Margaret Whatley

State Department Members

Dr. Tommy Bice
Department of Education

Commissioner Jim Reddoch
Department of Mental Health

Commissioner Nancy Buckner
Department of Human Resources

Dr. Don Williamson
Department of Public Health

Colonel John E. Richardson
Department of Public Safety

Our Mission—

To secure resources to fund evidence-based community programs committed to the prevention of child maltreatment; we advocate for children and the strengthening of families.



The Alabama Department of Child Abuse and Neglect Prevention is the Alabama Chapter for Prevent Child Abuse America. The Alabama PCAA was established May 18, 2007.

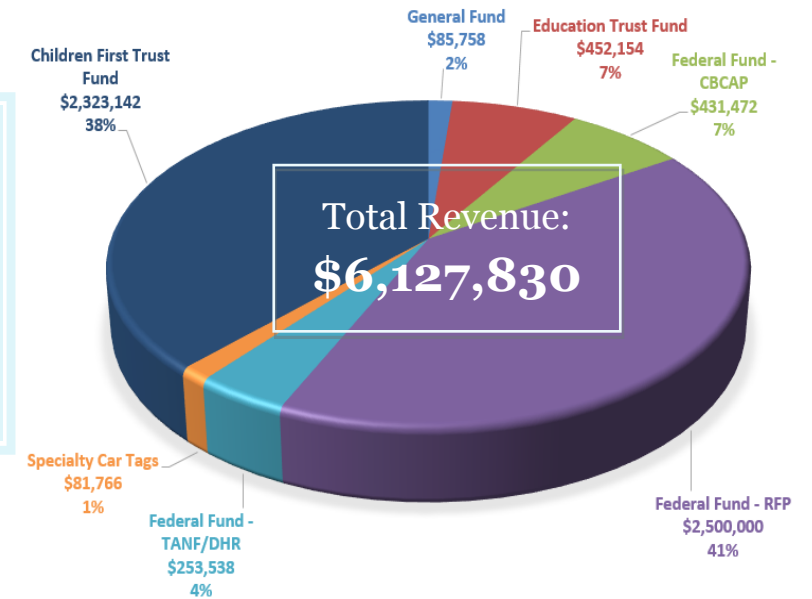


Contact Us—

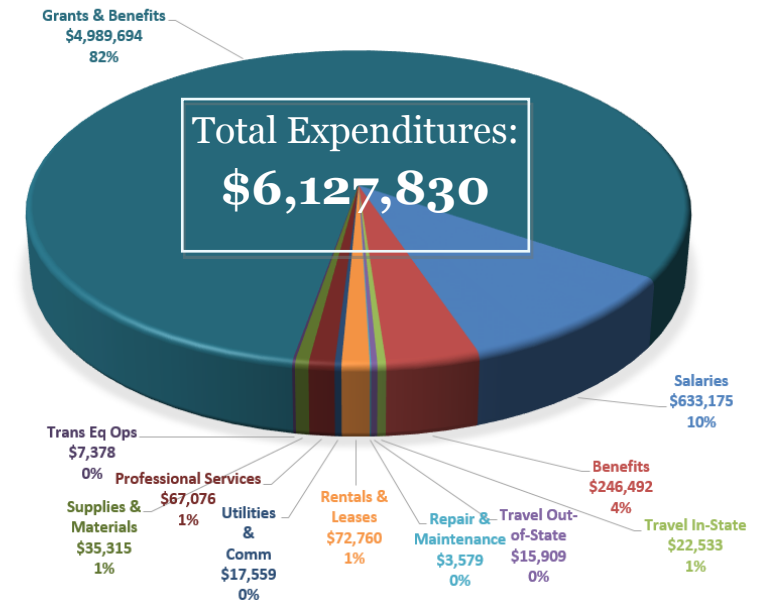
60 Commerce Street, Suite 1000
Montgomery, Alabama 36104
(334) 262-2951
ctf.alabama.gov

Financial Statement for Fiscal Year 2015

82%
directly fund child abuse and neglect prevention programs



\$4.9M
distributed to fund prevention programs across the state



How Can You Help?

DONATE . . .MAKE A TAX-DEDUCTIBLE DONATION

Help prevent child abuse and neglect by making a tax-deductible donation of any amount to the Alabama's *Children's Trust Fund*. Donations can be made by visiting our website at <http://ctf.alabama.gov>.

CREATE AN HONORARY OR MEMORIAL FUND

Honor the life of someone special by designating the *Department of Child Abuse and Neglect Prevention's Children's Trust Fund* as a recipient of tax deductible honorary or memorial donations.

ALABAMA INCOME TAX CHECK OFF

Over 85% of the *Department of Child Abuse and Neglect Prevention's Children's Trust Fund* dollars go directly to fund programs that protect our children from abuse and neglect. Income tax refunds can become an investment in the children of this State. This tax-deductible donation can be done by simply attaching Schedule DC to your State Income Tax Return and checking 1d "Child Abuse Trust Fund".

NETWORK . . .CONTACT YOUR STATE LEGISLATOR

Request support for ADCANP and the programs we fund in your communities to ensure healthier children and stronger families, and reduce the avoidable taxpayer expenses through providing community-based programs across Alabama.

PURCHASE A PREVENTING CHILD ABUSE AND NEGLECT LICENSE PLATE . . .

When you buy a Children's Trust Fund tag or a Realtor® specialty license plate, approximately 92% of the purchase price goes directly to fund community-based prevention programs in Alabama. These tags are available at every County Probate Office and are tax-deductible. They can be personalized with any combination of six letters or numerals at no additional charge.

The Alabama Department of Child Abuse and Neglect Prevention (ADCANP), *The Children's Trust Fund*, is the only statewide organization focused exclusively on the issue of child abuse and neglect prevention. We advocate for children and the strengthening of families.

32
years protecting children in
the State of Alabama

8,894
children with indication of
abuse or neglect in Alabama*

45
Alabama's rank in overall
child well-being

*2015 Kids Count Data Book



Greetings:

We are proud to present our 2015 Annual Report. This report highlights our revenue sources, expenditures, grantees and program evaluation. We also are featuring our Strengthening Families work and the Cribs for Kids program.



The Department of Child Abuse and Neglect Prevention, "The Children's Trust Fund", works diligently to secure the resources to annually grant funding to community-based entities that work in various program areas of parent education and support; home visitation; respite; mentoring; and public awareness to prevent child maltreatment. During the 2015 program year, we commissioned and released the "Cost of Child Maltreatment to Alabama's Economy" report through the University of Alabama. This report revealed that the cost of child maltreatment for 2013 (the most recent year data were available for examining) was conservatively over \$2.3 billion. Our grantees fully understand the importance of working with families and communities to ensure that children can be raised in safe, secure and nurturing environments. Each of our grantees are required to have staff complete the seven-module "Bringing the Protective Factors to Life and Work" through the online training at the National Alliance of Children's Trust and Prevention Funds. Alabama leads the nation in the number of people who have completed this valuable training that undergirds our Strengthening Families™ work.

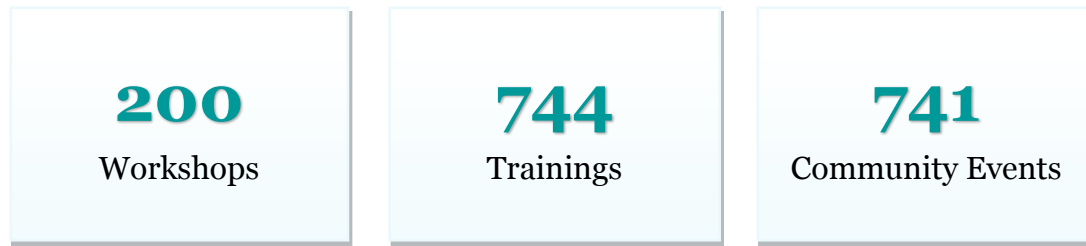
ADCANP/CTF provides on-going training and technical assistance to our grantees that ensures accountability and progress. Working together with our grantees and partnering with other state agencies and organizations, the Department of Child Abuse and Neglect Prevention seeks to improve the lives of children and families in Alabama.

Warmest regards

Sallye R. Longshore
Executive Director

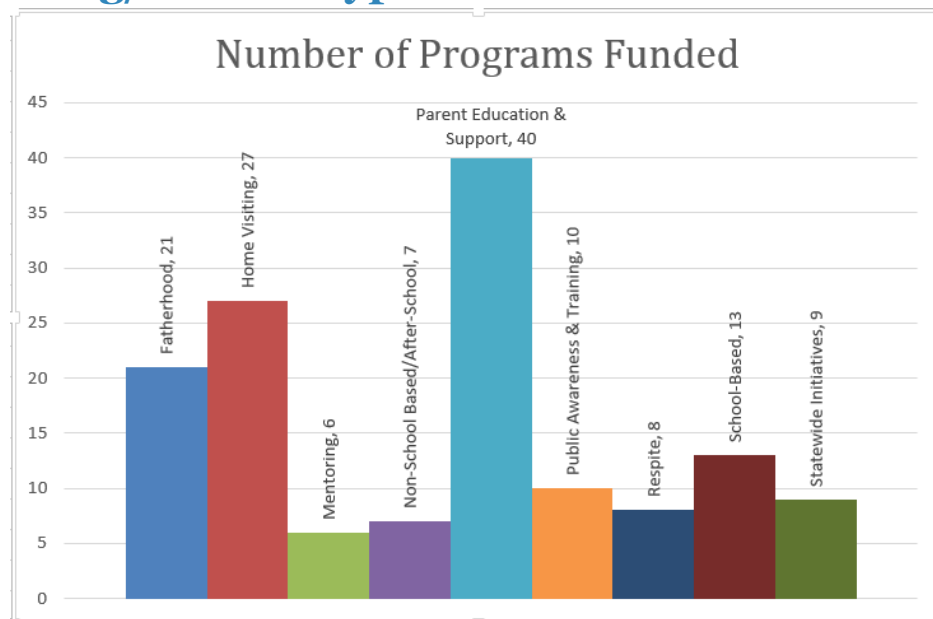
Program Evaluation

During the 2014-2015 program year, ADCANP/CTF contracted with The University of Alabama to conduct a process and outcome-level evaluation of the Department-funded programs. Grantees funded for this program year provided direct services to **32,474** clients. **5,567** Public Outreach/Awareness Activities were held throughout the year with a potential average audience of **1,365,014** people per month. Activities included community fairs, trainings, speaking engagements, media events and print media.



Programming/Service Type

141
community
prevention
programs
funded



Strengthening Families™

Strengthening Families™ is a research-informed approach to increase family strengths, enhance child development and reduce the likelihood of child abuse and neglect. The focus is to engage families, programs and communities to build the following five protective factors:

- ◆ Parental resilience
- ◆ Social connections
- ◆ Knowledge of parenting and child development
- ◆ Concrete support in times of need
- ◆ Social and emotional competence of children



The Department has been funding the Strengthening Families™ Initiative since 2006 and has three nationally certified trainers.

1,068
people trained in
strengthening
families

Safe Sleep

ADCANP/CTF partners with the Alabama Department of Public Health's CoIIN (Collaborative Improvement and Innovation Network) to reduce infant mortality. **Sleep-related deaths account for about 22% of the total cases of infant mortality in the state.**



The Department works closely with ADPH through our public awareness campaigns, our grantees, and the Cribs for Kids® program to promote safe sleep.

600
Cribs distributed
through Cribs for
Kids